

HIGH POWER ISOLATION TRANSFORMER LL2418

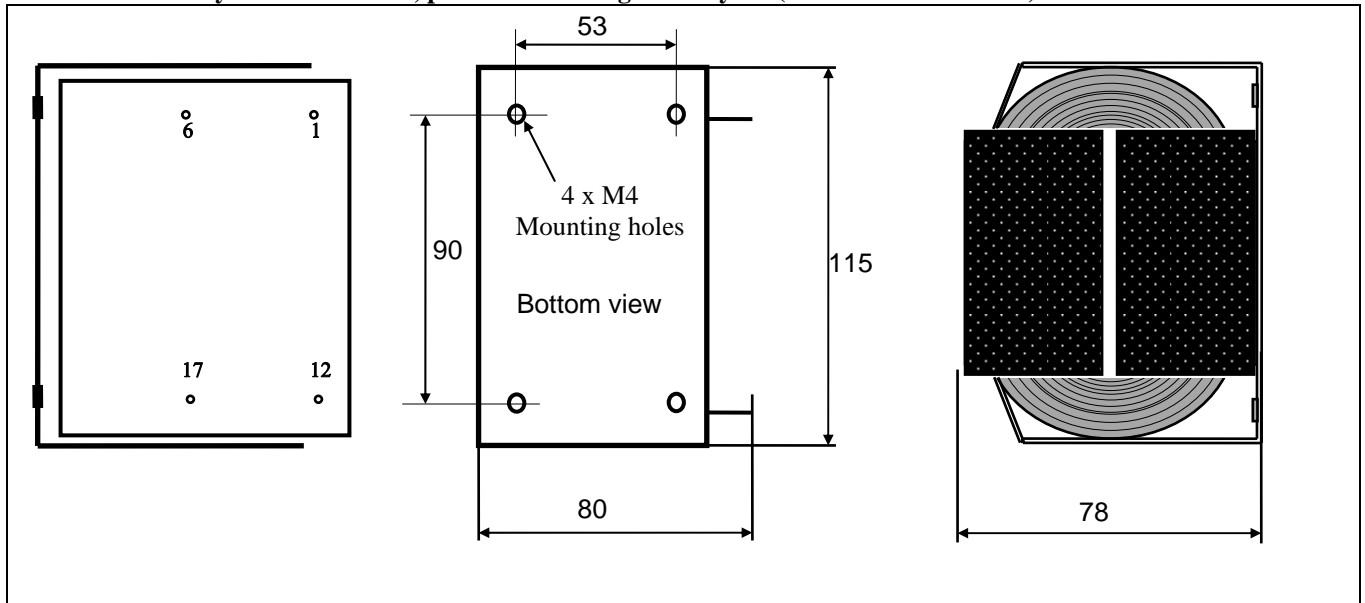
LL2418 is a high power (400W across 4 Ω at 50Hz) line isolation transformer for power amplifier output. The transformer is highly sectioned with harmonically sized sections. This results in minimum leakage inductance and thus an excellent frequency response. The transformer is based on our general purpose high power isolation transformer LL2410.

The transformer has a special audio C-core of our own production.

Turns ratio:

1 : 1

Physical dimensions, pin and mounting hole layout (all dimensions in mm)



Spacing between pins:

25.4 mm (1.0")

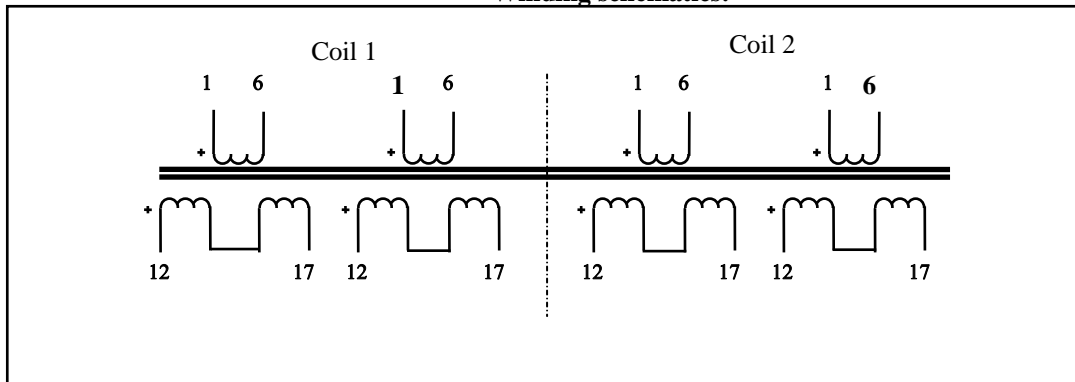
Spacing between rows of pins:

76.2 mm (3.0")

Weight:

2.5 kg

Winding schematics:



Static resistance of each primary:

0.2 Ω

Static resistance of each secondary:

0.2 Ω

Max voltage per primary winding, at 50 Hz:

40 volts

Max voltage per secondary winding, at 50 Hz:

40 volts